

TCM's

# BEST Energy Package



★★★  
TRI COUNTY METALS  
**45 YEAR**  
Platinum Warranty

Investment in savings for your home with a “Cool Roof.”



TCM 03 2020 SD



# INVEST IN YOUR HOME WITH CONFIDENCE

Consider selecting a TCM contractor'sEDGE or TCM master'sEDGE contractor that installs our Energy Package



"When they go through our program, installers will have a solid working knowledge of our panel, color and accessory options, and knowledge of key aspects of how to install our metal roofing system."



**David Grimes,**  
TCM contractor'sEDGE™ Trainer

## Installation Knowledge

You'll have a contractor trained with installation knowledge when choosing a contractor who has been through our **TCM contractor'sEDGE** or **TCM master'sEDGE** programs.

There are two parts to our training program for contractors. Contractors are comprehensively trained on how to properly install our metal roofing panels. We also equip them with the tools they will need to help guide you towards a metal roofing system that will include all of the metal roofing accessories and trim components you'll need to get the roof you want.



## How will you pay for your new roof?

Let us help get you the TCM Energy Package you really want with the affordability of a low monthly payment. Ask us about our attractive, introductory, no-money-down loan options like 12-months-same-as-cash, or low 6.99% interest rate for 7 / 10 years. Our loan program, offered by independent contractors enrolled in our programs, can include both material and labor for your project. Let us make the process of selecting the metal roof you want more affordable.

# COOL ROOF ILLUSTRATION

**Best energy package using “Energy Star” painted metal products for exposed fastener or standing seam\*.**

## 1 - TCM Synthetic or Ultra HT peel and Stick

Two methods used to secure your warranty: use peel and stick in the valleys, chimneys, and all other critical install areas. Next, finish your roof with TCM synthetic underlayment materials.

TCM Preferred method and TCM master’sEDGE install method is to apply peel and stick over your entire deck for best weathertight and fastener-secured roof.

## 2- Radiant Barrier

This important UV reflective material is the secondary protection against the UV rays attacking your attic with heat. When your roof heats up saturation occurs holding heat. Radiant Barrier reflects that heat from entering your roof.

## 3- 1x4 Purlin System

The ¾” space allows for heat dissipation prior to hitting the reflective radiant barrier. The radiant barrier and space equal an R-value of 7, keeping you cool.

## 4- TCM Flex Pro or Snap Z

Properly ventilating your home moves more heat out of your attic and our ventilation products are essential to keep your house attic cooler. Proper ventilation with TCM products is an important feature for Best Energy Package and a key component of energy savings.

## 5 - Lifetime WoodZAC Fasteners

TCMs lifetime Woodbinder fasteners come in matching colors of your selected color roof panel. The small stainless-steel head helps for low visibility on the roof, but gives superior weathertightness with encapsulation of the grommet.

## 6 - Trims and Accessories

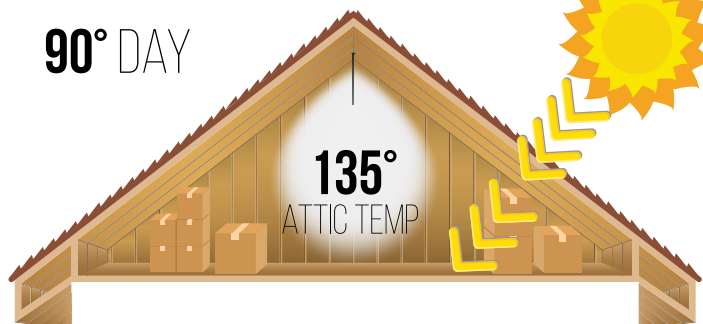
Finish your new “Platinum 45” warranty with the right TCM trims and accessories completes your new metal roof.

## 7 - Energy Star Painted Roof Panels

Your roof earns TCMs “Platinum 45” warranty being topped off with an “Energy Star” painted Sherwin Williams metal. TCM uses two Energy Star systems depending which TCM product fits your budget and goals. Follow TCM guidelines for “Platinum 45” you earn a 45-year warranty on the system of your choice.

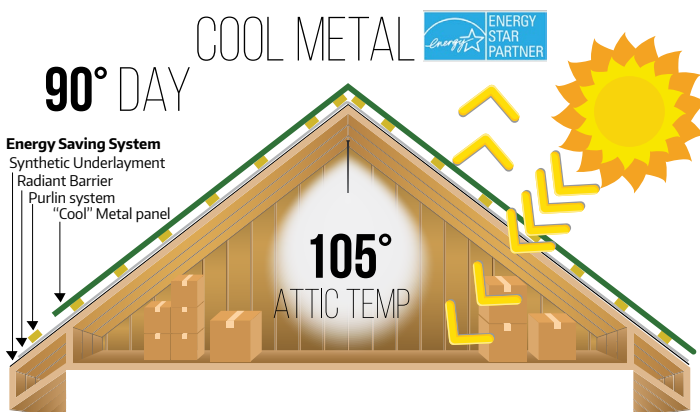
HOT SHINGLES

90° DAY



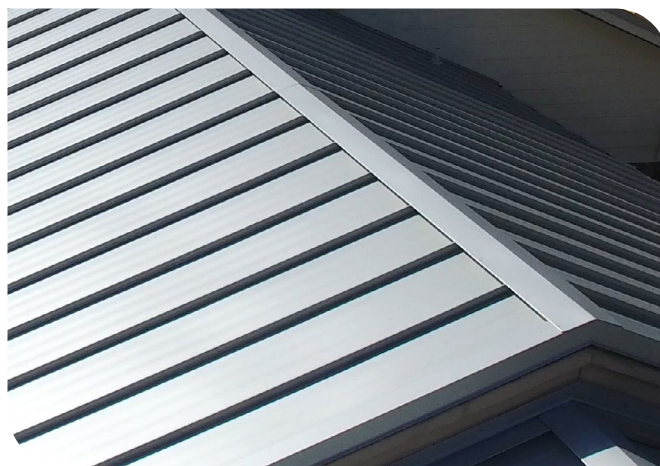
COOL METAL

90° DAY



Shingle roofs are notorious for heat saturating your attic. This high attic temp makes your home air conditioner work even harder trying to keep the inside of the home cool on hot days.

By contrast, a metal roof with an “Energy Star Cool Roof” paint system will reflect heat away from your attic helping your home air condition work less and ultimately saving you money on your monthly home cooling cost.



# DEFENDER SYSTEM EXTENDED WARRANTY – 45 YEARS



This limited warranty applies to consumers who have Tri County Metals (TCM) exclusive DEFENDER EXTENDED WARRANTY SYSTEM installed on their residence. This extended warranty period is only good for products installed in North America. The DEFENDER SYSTEM shall include the following items purchased from TCM which are installed on consumer's roof: Ultra HT Wind & Water Seal properly taped at laps, Radiant Barrier properly taped at laps, 1 X 4 Purlin System, TCM Core Defender Paint Systems® or Max Defender Paint Systems®, properly vented roof system using TCM applicable closure strips, Ridge Caps, Gable and Edge trims, Fireplace and Skylights trimmed to TCM details, tacky tape where required by install details, and Titebond Sealant where required by TCM details. Pipe Boots, goosenecks, nails, rivets and screws will be purchased from TCM. Exposed fasteners will be TCM WoodZAC Fasteners painted to match the roof panels.

Although it is recognized by Sherwin-Williams and TCM that most coatings, including TCM's Exclusive Core Defender Paint Systems® and Max Defender Paint Systems® will fade and change appearance to some degree over a period of time in outdoor installations, and that such changes may not be uniform between surfaces not equally exposed, Sherwin-Williams warrants TCM panels covered by this warranty will conform to the performance standards listed below.

## SECTION A: EXTENDED WARRANTY

1. Extended to Forty-five (45), TCM's Core Defender Paint Systems® and Max Defender Paint Systems® will not peel, flake, or otherwise lose adhesion to an extent that is apparent on ordinary outdoor visual observation. Further, failure due to substrate issues including, but not limited to corrosion is not covered by this Limited Warranty.

2. This "Platinum 45" extended warranty is tendered for the sole benefit of the original owner.

## SECTION B: REMEDY

If our Core Defender Paint System®, or Max Defender Paint System® fails to comply within the limited warranty, Sherwin-Williams will pay for labor and material reasonably necessary to repaint, repair, or replace, at their option, the metal panels exhibiting the conditions described above or refinish the defective portion of the field installation. The decision whether to replace or refinish to remedy an honored claim will be made at the sole discretion of Sherwin-Williams. This warranty also applies to the part(s) being repainted, repaired or replaced, but only for the unexpired portion of the Warranty period applicable to the original coil coated part. Sherwin-Williams SHALL NOT, UNDER ANY CIRCUMSTANCES, BE LIABLE FOR SPECIAL OR CONSEQUENTIAL DAMAGES, such as, but not limited to, damage or loss of other property or equipment, loss of profits or revenue, cost of capital, cost of purchase or replacement of other goods, or claims of customers of Purchaser for business or service interruptions.

## SECTION C: LIMITED WARRANTY EXCLUSIONS

This Limited Warranty does not apply to other causes of degradation, including:

1. Failures or damage resulting from under-film or edge corrosion, or failure or defects of the metal substrate
2. Core Defender Paint System®, and Max Defender Paint System® that has been stored/installed in such a way that allows contact with animals or animal waste;
3. Harmful fumes or foreign substances in the atmosphere, or salt spray;
4. Core Defender Paint System®, and Max Defender Paint System® which has been damaged due to moisture entrapment in bundles during transit or storage or which has been stored or installed in such a way that allows standing water on the coating;
5. Significant differences in insulation below coated metal panel;
6. Where materials/items such as solar panels are attached/adhered to the product.
7. The fade warranty does not apply to metallic colors. Fade cannot be measures on these metallic colors.

301 S.E. 16th Street,  
Trenton, FL 32693  
352-463-8400 | 1-877-766-3309

Date of Purchase: \_\_\_\_\_

Name of Owner: \_\_\_\_\_

Address of Installation: \_\_\_\_\_

Tri County Metals' Invoice #: \_\_\_\_\_

Name of Installer: \_\_\_\_\_

